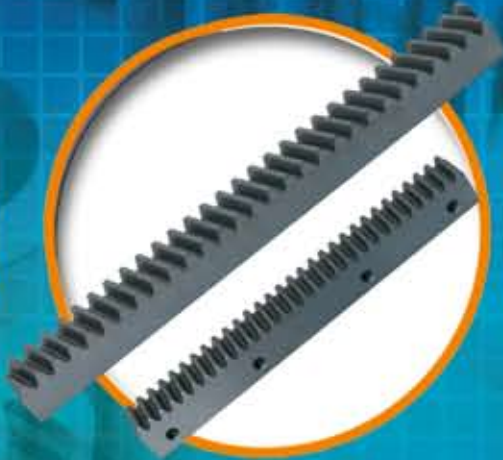


CST

嘉晟精密有限公司



精密連軸器
PRECISION SHAFT COUPLING

精密齒條
PRECISION RACK

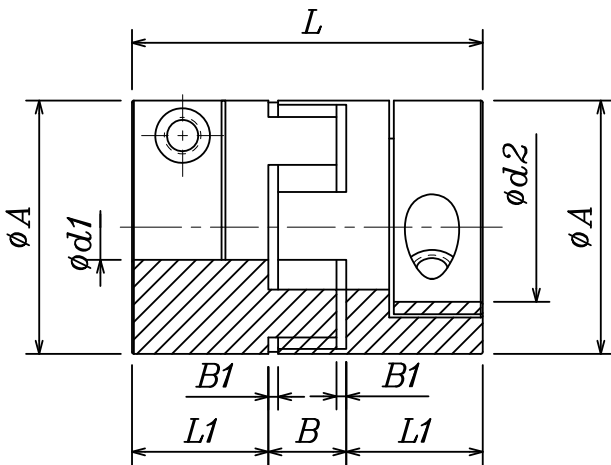
CST

無背隙連軸器 Backlash-Free Shaft Coupling



- 預應方式無背隙軸連接，適用於心軸驅動器、升高平台、工具機驅動器等
- 三件式連軸器
- 軸向插入性一易於盲目組裝，免除費時的螺絲連接
- 體積小一飛輪輕
- 免保養、方便目視檢查
- 緩衝件有多種彈性體硬度
- 現貨適應各種平常軸尺寸
- 成品孔徑達 ISO H7 配合 (脹緊軸套除外)
- 鍵槽尺寸自 $\Phi 6\text{mm}$ 起，符合 DIN6885 shet 1-JS9
- GS 本體：鋁合金材質
- 基本設定，見

- Backlash-free shaft connection under prestress for spindle drivers , elevating platforms , machine tool drives , etc
- Single kupplung in three parts
- Axial plug-in ability-easy blind assembly , without any time-consuming screw connections
- Small dimensions-low flywheel mass
- Maintenance-free , easy to check visually.Different elastomer hardness of spiders
- Available form stock for all usual shaft dimensions
- Finish bore acc.To ISO fit H7(apart from clamping hub) , keyway , from $\Phi 6\text{mm}$ acc.To Din 6885 shet 1-JS9
- GS Body:Aluminum alloy
- Basci programme see



D. KUPPLUNG 尺寸 Size	扭力 Torrues		成品孔徑 Finish bores		尺寸 Dimensions (mm)					夾緊螺絲 Clamping Screws	
	T(Nm)	T.max(Nm)	d1(min)	d2(max)	ϕA	B	B1	L	L1	M	T(Nm)
GS19	17	34	6	19	40	16	2.0	66	25	M6	10.5
GS24	60	120	8	28	55	18	2.0	78	30	M6	10.5
GS28	160	320	10	38	65	20	2.5	90	35	M8	25.0
GS38	325	650	12	45	80	24	3.0	114	45	M8	69.0
GS42	450	900	14	55	95	26	3.0	126	50	M10	120

◎ 訂單/When Ordering

訂購時，請務必註明產品2端孔徑。

When placing an order, make sure to include product no.

And stock bores(both sides)of product.

◎ GS28 - $\phi 20$ - $\phi 25$

Product No D1 D2

無背隙連軸器 BACKLASH-FREE COUPLINGS

緩衝件詳細資料 SPIDER DESCRIPTION DATA

徑向偏差

■ Lateral Misalignment



角向偏差

■ Angular misalignment



軸向偏差

■ Axial misalignment



CST Couplings 尺寸 Size	緩衝件硬度 Spider shore	標準偏差 Standard Misalignemnt			偏差DKM Misalignment DKM		
		(mm) 軸向 Axial Δka^2	(mm) 徑向 Lateral Δkr	(degrees) 角向 α Angular	(mm) 軸向 Axial Δka^2	(mm) 徑向 Lateral Δkr	(degrees) 角向 α Angular
GS14	92	+1.0	0.15	1.0°	+1.0	0.40	1.1°
	98	-0.5	0.09	0.9°	-1.0	0.33	0.9°
GS19	64		0.06	0.8°		0.29	0.8°
	92	+1.2	0.10	1.0°	+1.2	0.45	1.0°
GS24	98	-0.5	0.06	0.9°	-1.0	0.41	0.9°
	64		0.04	0.8°		0.36	0.8°
GS28	92	+1.4	0.14	1.0°	+1.4	0.59	1.0°
	98	-0.5	0.10	0.9°	-1.0	0.53	0.9°
GS38	64		0.07	0.8°		0.47	0.8°
	92	+1.5	0.15	1.0°	+1.5	0.66	1.0°
GS42	98	-0.7	0.11	0.9°	-1.4	0.60	0.9°
	64		0.08	0.8°		0.53	0.8°
GS42	92	+1.8	0.17	1.0°	+1.8	0.77	1.0°
	98	-0.7	0.12	0.9°	-1.4	0.69	0.9°
GS42	64		0.09	0.8°		0.61	0.8°
	92	+2.0	0.19	1.0°	+2.0	0.84	1.0°
GS42	98	-1.0	0.14	0.9°	-2.0	0.75	0.9°
	64		0.10	0.8°		0.67	0.8°

緩衝件硬度 Spider hardness	顏色 Color	材質 Material	溫度範圍 Temperature range	特性 Features
92 SHA	Yellow	TPU	-30°C to 100°C	<ul style="list-style-type: none"> 導電 electrically conductive
98 SHA	Red	TPU	-30°C to 100°C	<ul style="list-style-type: none"> 高阻尼 high damping 預應力範圍 backlash-free in 內無背隙 the range of prestress 心軸驅動 spinde drives
64 SHA	Green	TPU	-30°C to 130°C	<ul style="list-style-type: none"> 高扭力僵硬 high torsional stiffness 控制驅動 control drives 工具機心軸 tool spindles 行星齒輪 planetary gears 高周邊溫度 high ambient temperat
70 SHA	White	TPU	-30°C to 130°C	

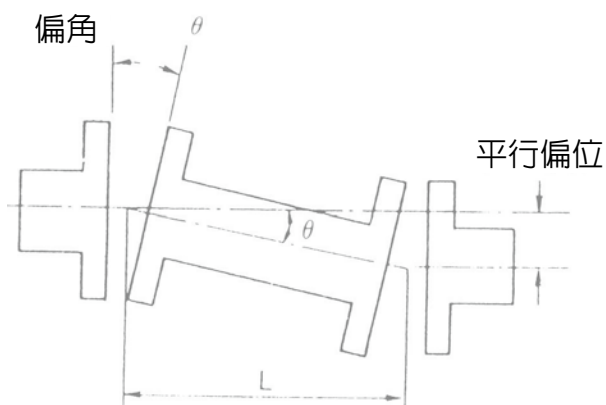
無間隙鋼片式連軸器



※ 性能表 Performance chart

型式 Pattern	容許扭矩 (kg-m) Allows the torque	最高轉數 (Rpm) Maximum revolution	容許角度偏差 (θ) Allows the angular deviation	重量 Weight
HP - 81	8	5000	1°	1.1
HP - 93	18	5000	1°	1.7
HP - 104	25	5000	1°	2.5
HP - 126	45	5000	1°	4.3
HP - 144	80	5000	1°	6.9

註：最高轉數欲提高者，需作動平衡校正。



$$\text{平行偏位量} = L \times \tan \theta ; \quad \text{軸向偏位量} = (L / \cos \theta) - L$$

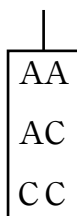
※ 訂單 When Ordering

訂購時，請務必註明產品兩端孔徑。

When placing an order, make sure to include product no.

And stock bores (both sides) of product

※ HP-104-CC-φ30-φ35

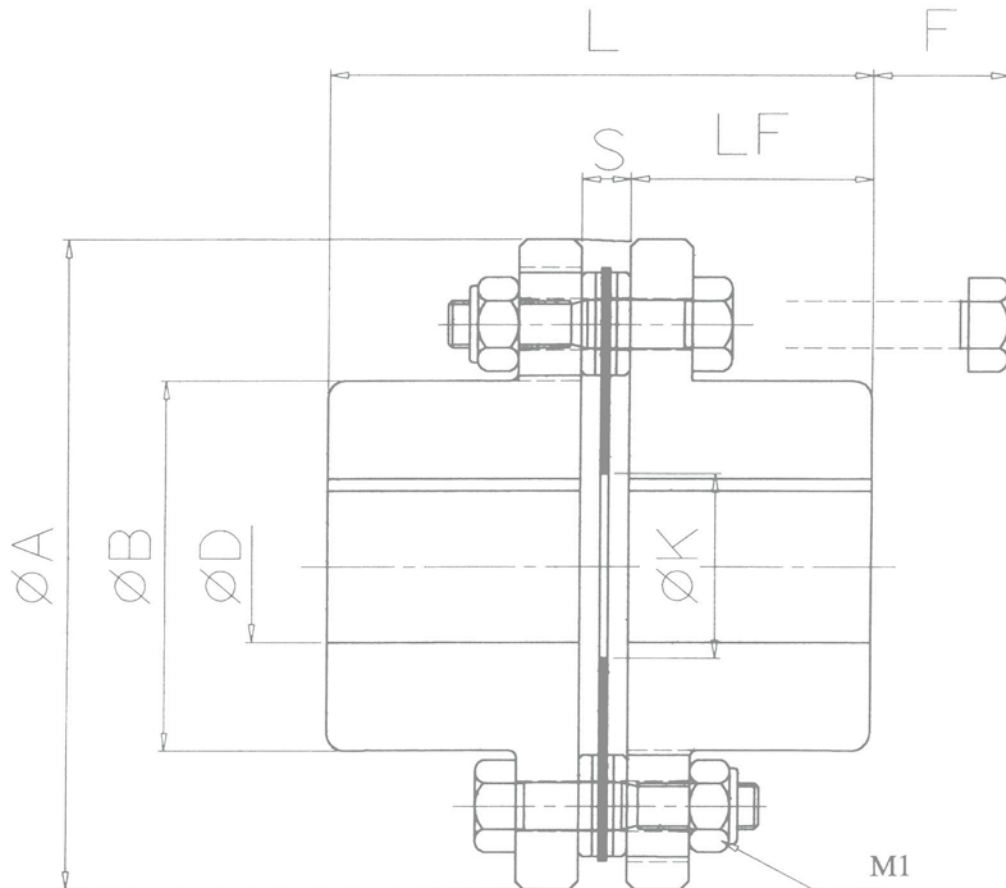


※ 寸法圖及規格

Dimension chart and specification

A: 用鍵聯結

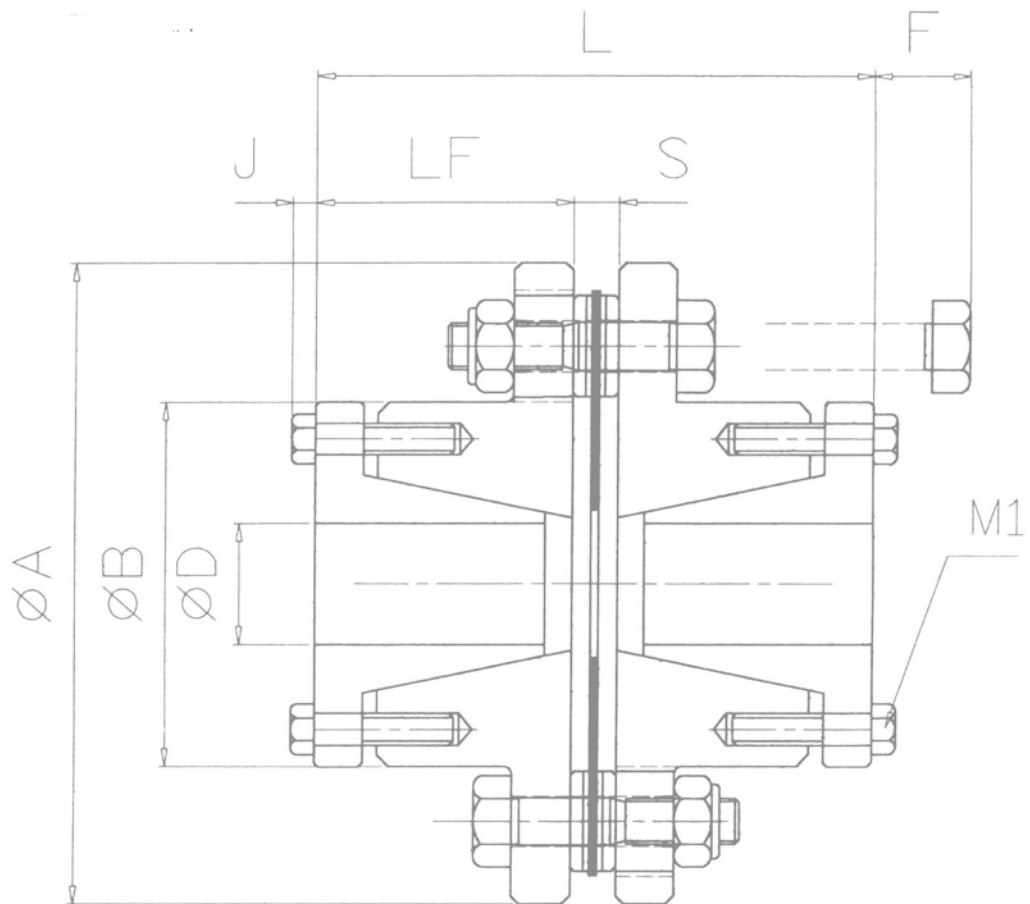
Joins with the key



型式 Pattern	最大 Biggest D	A	B	L	LF	S	K	F	M
HP - 81	32	81	46	56.5	25	6.5	30	16	4 - M 6
HP - 93	35	93	51	66.5	28	10.5	37	22	4 - M 8
HP - 104	42	104	61	75	32	11	40	20	4 - M 8
HP - 126	50	126	71	95	41	13	45	25	4 - M 10
HP - 144	60	144	88	109	48	13	50	28	4 - M 10

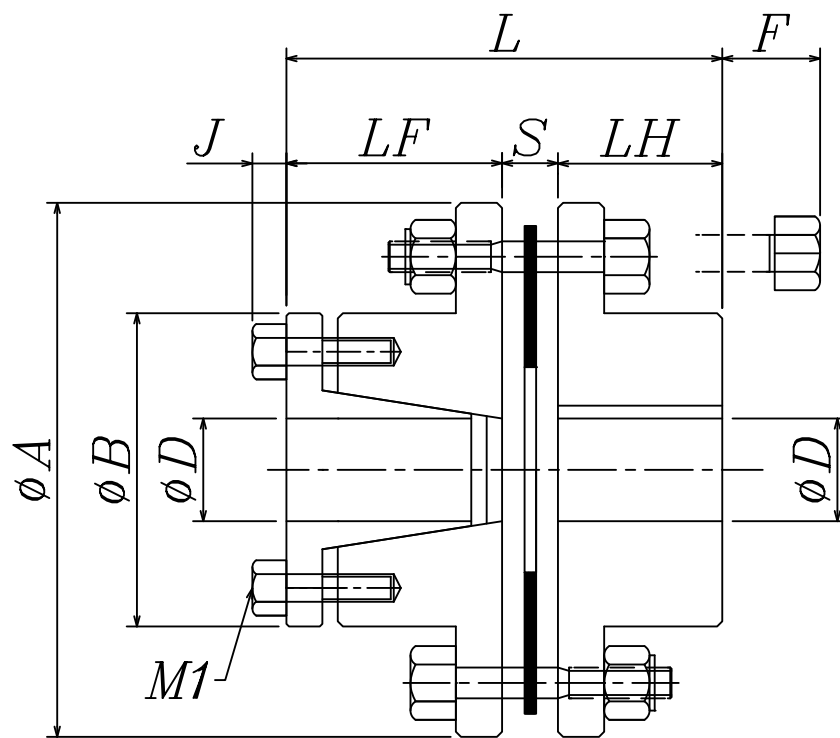
C:用軸套聯結

Joins with the axle sleeve



型式 Pattern	最大 Biggest D	A	B	L	LF	S	F	J	M 1
HP - 81	25	81	46	78.5	36	6.5	10	5	4 - M 6
HP - 93	30	93	51	88.5	39	10.5	16	5	4 - M 6
HP - 104	35	104	61	95	42	11	20	6	4 - M 6
HP - 126	40	126	71	121	54	13	20	7	4 - M 8
HP - 144	50	144	88	133	60	13	22	7	4 - M 8

AC: 鍵 + 軸套聯結



型式 Pattern	最大 Biggest D	A	B	L	LF	LH	S	F	J	M 1
HP - 81	25	81	46	67.5	36	25	6.5	10	5	4 - M 6
HP - 93	30	93	51	77.5	39	28	10.5	16	5	4 - M 6
HP - 104	35	104	61	85	42	32	11	20	6	4 - M 6
HP - 126	40	126	71	108	54	41	13	20	7	4 - M 8
HP - 144	50	144	88	121	60	48	13	22	7	4 - M 8

齒條裝配說明

為了可以更順利的安裝連接用齒條，標準齒條的兩端端面將會加工為半齒齒底；以方便跟下一支齒條的端面半齒齒底連接成一個全齒。下圖表示為兩支齒條如何連接並由齒規可以擁有準確的齒距位置。

關於斜齒齒條相皆可以藉由反向齒規的配合以便可以精準的連接齒條。

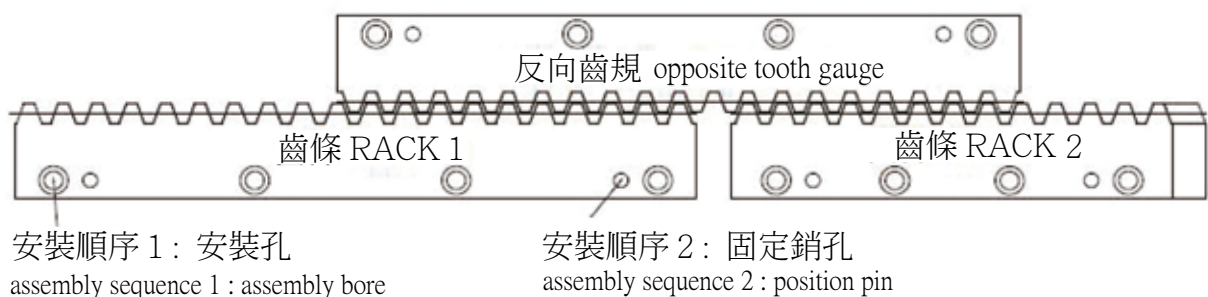
1. 而在齒條安裝相接時，我們建議先鎖上齒條側面的安裝孔，並依照基座上相對的孔位依序鎖上；並藉由安裝齒規可以很準確的將齒條的齒距位置安裝完成。
2. 最後再將齒條上的兩端側面的固定銷孔給固定上即完成安裝。

Instruction Of Rack Assembly



To assemble connected racks more smoothly, 2 ends of a standard rack would add half tooth which is convenient for next half tooth of next rack to be connected to a complete tooth. The following drawing shows how 2 racks connect and tooth gauge can control pitch position accurately.

With regards to connection of helical racks, it can be connected accurately by opposite tooth gauge.

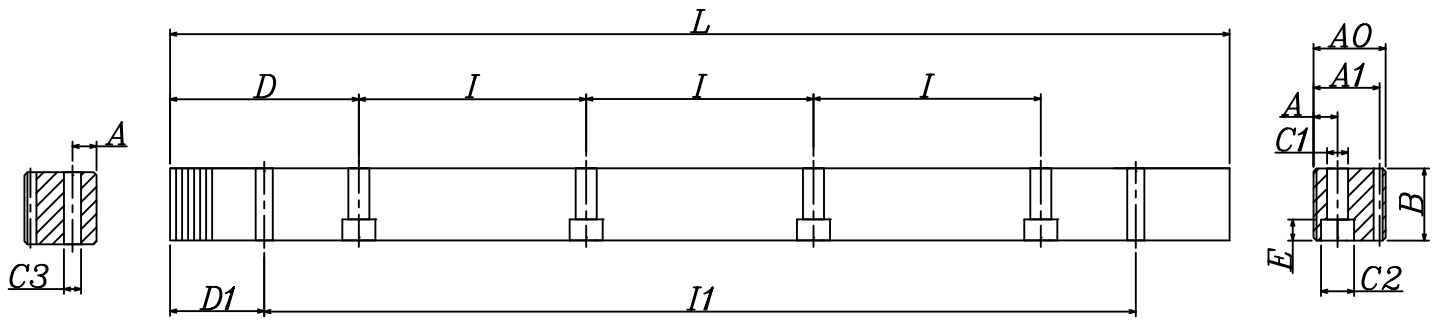
1. When connecting racks, we recommend lock bores on the sides of rack first, and lock bores by the sequence of the foundation. With assembling the tooth gauge, pitch position of racks can assembled accurately and completely.
2. Last, lock the position pins on 2 sides of rack; the assembly is completed.



齒條型號說明 Rack Code Instruction

材料 Material	齒型 Rack Type	棒形 Shape	齒面處理 Treatment of Tooth	硬度處理 Hardness	模數 Module	長度 Length	鑽孔 Holes
A ↓ A = S45C	S ↓ S = 直齒 Straight	I ↓ T = 四角棒 Tetragon	G ↓ G = 研磨 Ground	H/Q ↓ H = 硬度處理 Hardened Q = 調質 Tempered & quenched	20 ↓ 1	50 ↓ 50 = 500mm	N ↓ N = 無鑽孔 No Holes
B = SCM440	H = 斜齒 Helical		M = 精銑 Milled	M = 無硬度處理 Without Hardness	2	100 = 1,000mm	
					3		
					4		
					5		
					6		
					8		
					10		

型號：ASTGH



型號 Code	模數 Module	L	齒數 T00th No.	B	AO	A1	D	I	孔數 Hole No.	A	C1	C2	E	D1	I1	C3	總齒距誤差 Pitch Error / 300mm	齒面強度 Tooth surface torque(kgf)		
ASTGH	20	50	2	502.65	80	24	24	22	62.83	125.66	4	8	7	11	7	31.3	440.1	5.7	0.022	246
	20	100	2	1005.31	160	24	24	22	62.83	125.66	8	8	7	11	7	31.3	942.7	5.7	0.022	
	30	50	3	508.94	54	29	29	26	63.62	127.23	4	9	10	15	9	34.4	440.1	7.7	0.024	553
	30	100	3	1017.88	108	29	29	26	63.62	127.23	8	9	10	15	9	34.4	949.1	7.7	0.024	
	40	50	4	502.65	40	39	39	35	62.83	125.66	4	12	10	15	9	37.5	427.7	7.7	0.025	983
	40	100	4	1005.31	80	39	39	35	62.83	125.66	8	12	10	15	9	37.5	930.3	7.7	0.025	
	50	50	5	502.65	32	49	39	34	62.83	125.66	4	12	14	20	13	30.1	442.4	11.7	0.025	1540
	50	100	5	1005.31	64	49	39	34	62.83	125.66	8	12	14	20	13	30.1	945.0	11.7	0.025	
	60	50	6	508.94	27	59	49	43	63.62	127.23	4	16	18	26	17	31.4	446.1	15.7	0.026	2210
	60	100	6	1017.88	54	59	49	43	63.62	127.23	8	16	18	26	17	31.4	955.0	15.7	0.026	
	80	50	8	502.65	20	79	79	71	62.83	125.66	4	25	22	33	21	26.6	449.5	19.7	0.027	3750
	80	100	8	1005.31	40	79	79	71	62.83	125.66	8	25	22	33	21	26.6	952.0	19.7	0.027	

製程說明：

精度等級：(JIS 二級)

材料：(S45C 中碳鋼) S45C

齒型：直齒

齒面處理：研磨

硬度處理：熱處理；硬度為 45~50 度

四面研磨：有

壓力角：20度

Manufacturing Description

Precision grade : (JIS Grade 2)

Material : (S45C Medium Carbon Steel) S45C

Type : Straight Rack

Treatment of Teeth : Ground

Hardness : Heat Treatment ; 45~50 degree

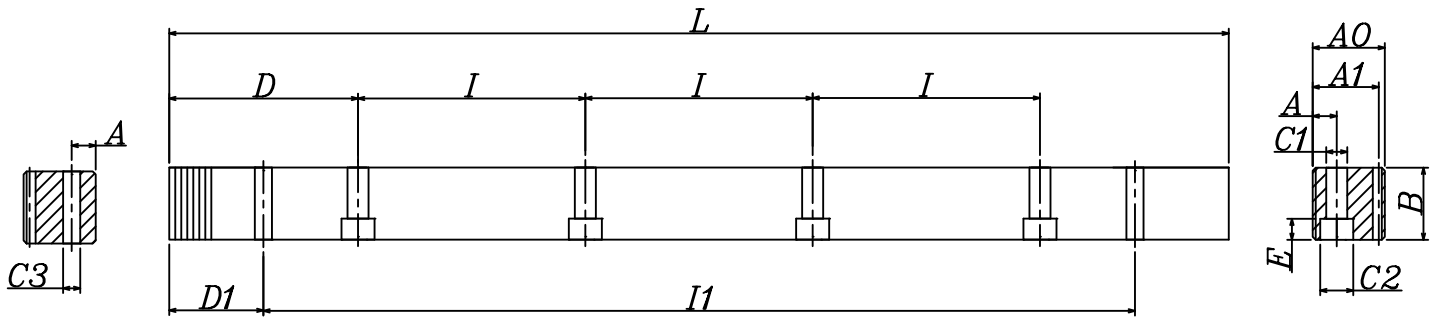
Sides Ground : Included

Pressure Angle : 20 degree

● 不同尺寸與材質以可依照圖面客製化

● Other Dimensions / Materials could be customized by drawings

型號：ASTMQ



型號 Code	模數 Module	L	齒數 Tooth No.	B	AO	A1	D	I	孔數 Hole No.	A	C1	C2	E	D1	I1	C3	總齒距誤差 Pitch Error / 300mm	齒面強度 Tooth surface torque(kgf)	
ASTMQ	20	50	2	502.65	80	25	24	22	62.83	125.66	4	8	7	11	7	31.3	440.1	5.7	135
	20	100	2	1005.31	160	25	24	22	62.83	125.66	8	8	7	11	7	31.3	942.7	5.7	
	30	50	3	508.94	54	30	29	26	63.62	127.23	4	9	10	15	9	34.4	440.1	7.7	560
	30	100	3	1017.88	108	30	29	26	63.62	127.23	8	9	10	15	9	34.4	949.1	7.7	
	40	50	4	502.65	40	40	39	35	62.83	125.66	4	12	10	15	9	37.5	427.7	7.7	1210
	40	100	4	1005.31	80	40	39	35	62.83	125.66	8	12	10	15	9	37.5	930.3	7.7	
	50	50	5	502.65	32	49	39	34	62.83	125.66	4	12	14	20	13	30.1	442.4	11.7	1980
	50	100	5	1005.31	64	49	39	34	62.83	125.66	8	12	14	20	13	30.1	945.0	11.7	
	60	50	6	508.94	27	59	49	43	63.62	127.23	4	16	18	26	17	31.4	446.1	15.7	1980
	60	100	6	1017.88	54	59	49	43	63.62	127.23	8	16	18	26	17	31.4	955.0	15.7	
	80	50	8	502.65	20	79	79	71	62.83	125.66	4	25	22	33	21	26.6	449.5	19.7	1980
	80	100	8	1005.31	40	79	79	71	62.83	125.66	8	25	22	33	21	26.6	952.0	19.7	

製程說明：

精度等級：(JIS 三級)

材料：(S45C 中碳鋼) S45C

齒型：直齒

齒面處理：精銑

硬度處理：調質處理

四面研磨：有

壓力角：20度

Manufacturing Description

Precision grade : (JIS Grade 3)

Matenal : (S45C Medium Carbon Steel) S45C

Type : Straight Rack

Treatment of Teeth : Milled

Hardness : Quenched

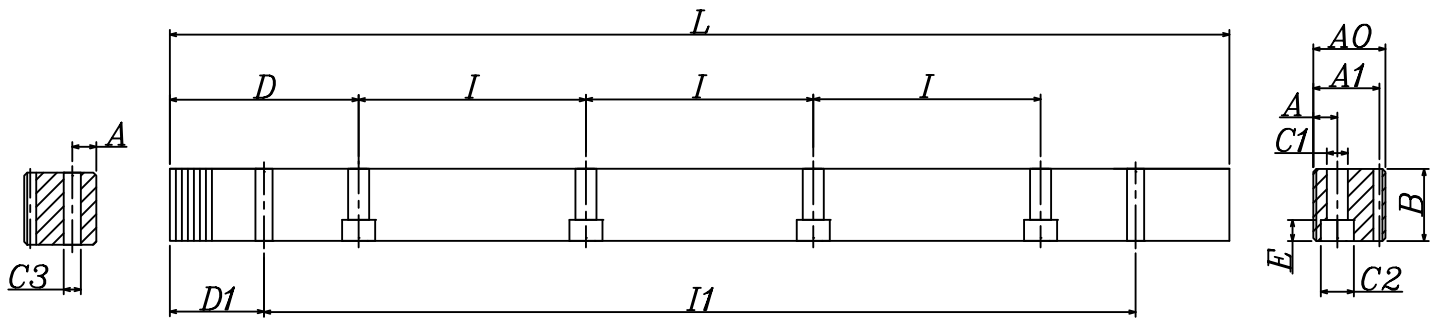
Sides Ground : Included

Pressure Angle : 20 degree

● 不同尺寸與材質以可依照圖面客製化

● Other Dimensions / Materials could be customized by drawings

型號：ASTM



型號 Code	模數 Module	L	齒數 T00th No.	B	AO	A1	D	I	孔數 Hole No.	A	C1	C2	E	D1	I1	C3	總齒距誤差 Pitch Error / 300mm	齒面強度 Tooth surface torque(kgf)	
ASTM	20	50	2	502.65	80	20	20	18	62.83	125.66	4	8	7	11	7	31.3	440.1	5.7	79
	20	100	2	999.03	159	20	20	18	62.83	125.66	8	8	7	11	7	31.3	942.7	5.7	
	30	50	3	508.94	54	30	30	27	63.62	127.23	4	9	10	15	9	34.4	440.1	7.7	186
	30	100	3	1017.88	108	30	30	27	63.62	127.23	8	9	10	15	9	34.4	949.1	7.7	
	40	50	4	502.65	40	40	40	36	62.83	125.66	4	12	10	15	9	37.5	427.7	7.7	339
	40	100	4	1005.31	80	40	40	36	62.83	125.66	8	12	10	15	9	37.5	930.3	7.7	
	50	50	5	502.65	32	50	40	35	62.83	125.66	4	12	14	20	13	30.1	442.4	11.7	540
	50	100	5	1005.31	64	50	40	35	62.83	125.66	8	12	14	20	13	30.1	945.0	11.7	
	60	50	6	508.94	27	60	50	44	63.62	127.23	4	16	18	26	17	31.4	446.1	15.7	780
	60	100	6	1017.88	54	60	50	44	63.62	127.23	8	16	18	26	17	31.4	955.0	15.7	
	80	50	8	502.65	20	80	80	71.5	62.83	125.66	4	25	22	33	21	26.6	449.5	19.7	1170
	80	100	8	1005.31	40	80	80	71.5	62.83	125.66	8	25	22	33	21	26.6	952.0	19.7	

製程說明：

精度等級：(JIS 五級)

材料：(S45C 中碳鋼) S45C

齒型：直齒

齒面處理：精銑

硬度處理：無

四面研磨：無

壓力角：20度

Manufacturing Description

Precision grade : (JIS Grade 5)

Material : (S45C Medium Carbon Steel) S45C

Type : Straight Rack

Treatment of Teeth : Milled

Hardness : No Heat Treatment

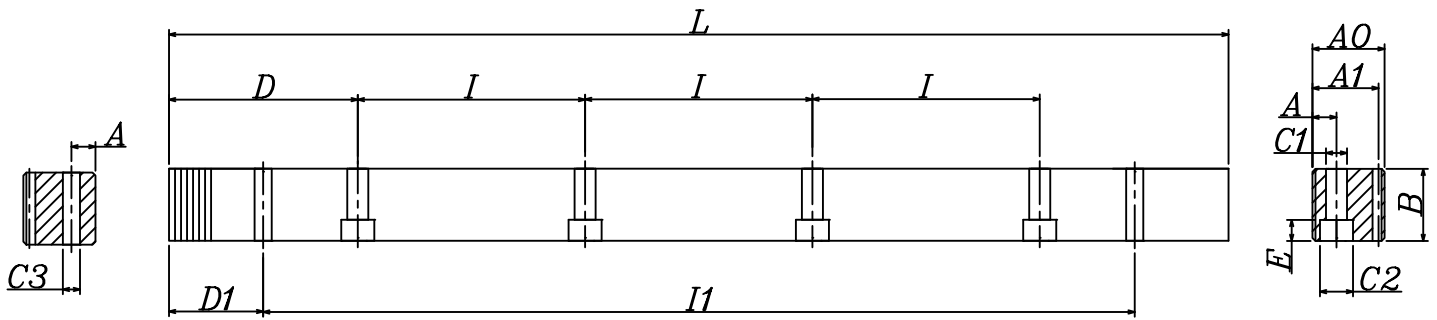
Sides Ground : Not Included

Pressure Angle : 20 degree

● 不同尺寸與材質以可依照圖面客製化

● Other Dimensions / Materials could be customized by drawings

型號：ASTMH



型號 Code	模數 Module	L	齒數 Tooth No.	B	AO	A1	D	I	孔數 Hole No.	A	C1	C2	E	D1	I1	C3	總齒距誤差 Pitch Error / 300mm	齒面強度 Tooth surface torque(kgf)	
ASTMH	20	50	2	502.65	80	24	24	22	62.83	125.66	4	8	7	11	7	31.3	440.1	5.7	246
	20	100	2	1005.31	160	24	24	22	62.83	125.66	8	8	7	11	7	31.3	942.7	5.7	
	30	50	3	508.94	54	29	29	26	63.62	127.23	4	9	10	15	9	34.4	440.1	7.7	983
	30	100	3	1017.88	108	29	29	26	63.62	127.23	8	9	10	15	9	34.4	949.1	7.7	
	40	50	4	502.65	40	39	39	35	62.83	125.66	4	12	10	15	9	37.5	427.7	7.7	2210
	40	100	4	1005.31	80	39	39	35	62.83	125.66	8	12	10	15	9	37.5	930.3	7.7	
	50	50	5	502.65	32	49	39	34	62.83	125.66	4	12	14	20	13	30.1	442.4	11.7	0.100
	50	100	5	1005.31	64	49	39	34	62.83	125.66	8	12	14	20	13	30.1	945.0	11.7	
	60	50	6	508.94	27	59	49	43	63.62	127.23	4	16	18	26	17	31.4	446.1	15.7	0.105
	60	100	6	1017.88	54	59	49	43	63.62	127.23	8	16	18	26	17	31.4	955.0	15.7	
	80	50	8	502.65	20	79	79	71	62.83	125.66	4	25	22	33	21	26.6	449.5	19.7	0.105
	80	100	8	1005.31	40	79	79	71	62.83	125.66	8	25	22	33	21	26.6	952.0	19.7	

製程說明：

精度等級：(JIS 六級)

材料：(S45C 中碳鋼) S45C

齒型：直齒

齒面處理：精銑

硬度處理：熱處理；硬度為 45~50 度

四面研磨：無

壓力角：20度

Manufacturing Description

Precision grade : (JIS Grade 6)

Material : (S45C Medium Carbon Steel) S45C

Type : Straight Rack

Treatment of Teeth : Milled

Hardness : Heat Treatment ; 45~50 degree

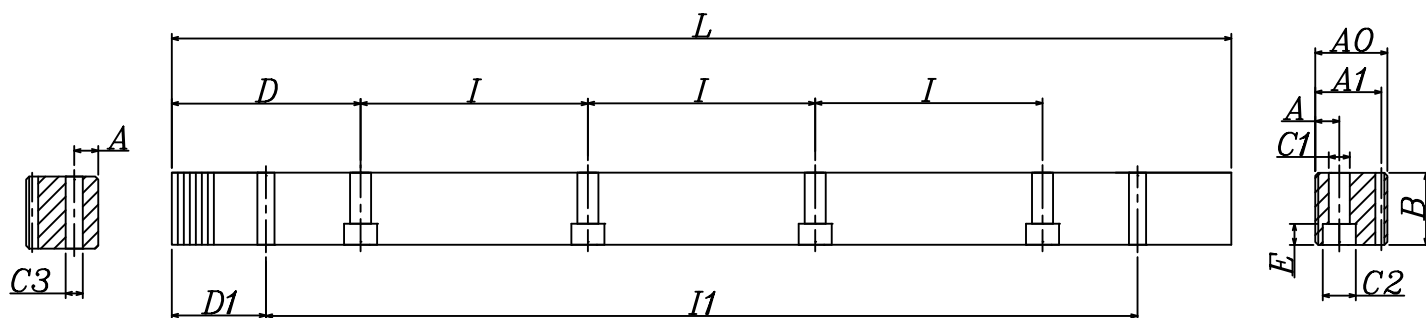
Sides Ground : Not Included

Pressure Angle : 20 degree

● 不同尺寸與材質以可依照圖面客製化

● Other Dimensions / Materials could be customized by drawings

型號：BSTGH



型號 Code	模數 Module	L	齒數 T00th No.	B	AO	A1	D	I	孔數 Hole No.	A	C1	C2	E	D1	I1	C3	總齒距誤差 Pitch Error / 300mm	齒面強度 Tooth surface torque(kgf)		
BSTGH	20	50	2	502.65	80	24	24	22	62.83	125.66	4	8	7	11	7	31.3	440.1	5.7	0.022	360
	20	100	2	1005.31	160	24	24	22	62.83	125.66	8	8	7	11	7	31.3	942.7	5.7	0.022	
	30	50	3	508.94	54	29	29	26	63.62	127.23	4	9	10	15	9	34.4	440.1	7.7	0.024	850
	30	100	3	1017.88	108	29	29	26	63.62	127.23	8	9	10	15	9	34.4	949.1	7.7	0.024	
	40	50	4	502.65	40	39	39	35	62.83	125.66	4	12	10	15	9	37.5	427.7	7.7	0.025	1380
	40	100	4	1005.31	80	39	39	35	62.83	125.66	8	12	10	15	9	37.5	930.3	7.7	0.025	
	50	50	5	502.65	32	49	39	34	62.83	125.66	4	12	14	20	13	30.1	442.4	11.7	0.025	2190
	50	100	5	1005.31	64	49	39	34	62.83	125.66	8	12	14	20	13	30.1	945.0	11.7	0.025	
	60	50	6	508.94	27	59	49	43	63.62	127.23	4	16	18	26	17	31.4	446.1	15.7	0.026	3320
	60	100	6	1017.88	54	59	49	43	63.62	127.23	8	16	18	26	17	31.4	955.0	15.7	0.026	
	80	50	8	502.65	20	79	79	71	62.83	125.66	4	25	22	33	21	26.6	449.5	19.7	0.027	5300
	80	100	8	1005.31	40	79	79	71	62.83	125.66	8	25	22	33	21	26.6	952.0	19.7	0.027	

製程說明：

精度等級：(JIS 二級)

材料：(SCM440)

齒型：直齒

齒面處理：研磨

硬度處理：熱處理；硬度為 55-60 度

四面研磨：有

壓力角：20度

Manufacturing Description

Precision grade : (JIS Grade 2)

Material : (SCM440)

Type : Straight Rack

Treatment of Teeth : Ground

Hardness : Heat Treatment ; 55~60 degree

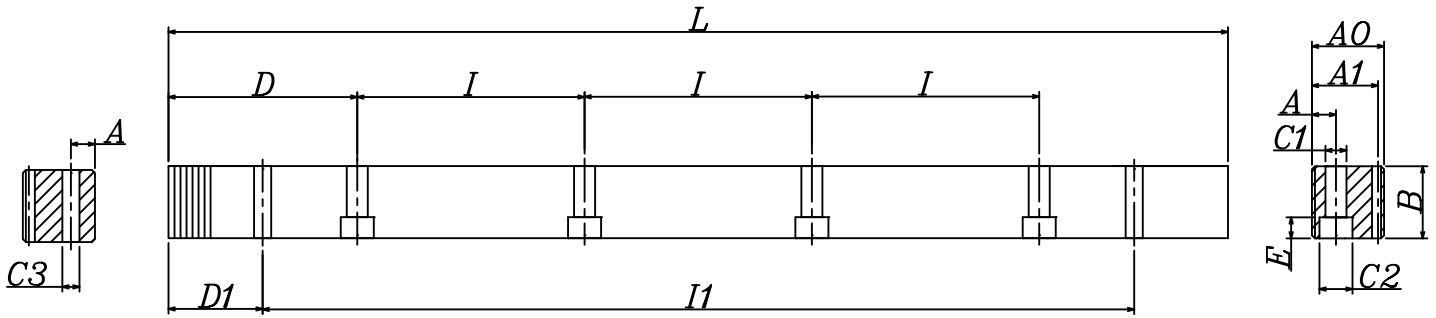
Sides Ground : Included

Pressure Angle : 20 degree

● 不同尺寸與材質以可依照圖面客製化

● Other Dimensions / Materials could be customized by drawings

型號：BSTMQ



型號 Code	模數 Module	L	齒數 Tooth No.	B	AO	A1	D	I	孔數 Hole No.	A	C1	C2	E	D1	I1	C3	總齒距誤差 Pitch Error / 300mm	齒面強度 Tooth surface torque(kgf)		
BSTMQ	20	50	2	502.65	80	25	24	22	62.83	125.66	4	8	7	11	7	31.3	440.1	5.7	0.034	179
	20	100	2	1005.31	160	25	24	22	62.83	125.66	8	8	7	11	7	31.3	942.7	5.7	0.034	
	30	50	3	508.94	54	30	29	26	63.62	127.23	4	9	10	15	9	34.4	440.1	7.7	0.034	421
	30	100	3	1017.88	108	30	29	26	63.62	127.23	8	9	10	15	9	34.4	949.1	7.7	0.034	
	40	50	4	502.65	40	40	39	35	62.83	125.66	4	12	10	15	9	37.5	427.7	7.7	0.038	768
	40	100	4	1005.31	80	40	39	35	62.83	125.66	8	12	10	15	9	37.5	930.3	7.7	0.038	
	50	50	5	502.65	32	49	39	34	62.83	125.66	4	12	14	20	13	30.1	442.4	11.7	0.040	1220
	50	100	5	1005.31	64	49	39	34	62.83	125.66	8	12	14	20	13	30.1	945.0	11.7	0.040	
	60	50	6	508.94	27	59	49	43	63.62	127.23	4	16	18	26	17	31.4	446.1	15.7	0.045	1950
	60	100	6	1017.88	54	59	49	43	63.62	127.23	8	16	18	26	17	31.4	955.0	15.7	0.045	
	80	50	8	502.65	20	79	79	71	62.83	125.66	4	25	22	33	21	26.6	449.5	19.7	0.050	3120
	80	100	8	1005.31	40	79	79	71	62.83	125.66	8	25	22	33	21	26.6	952.0	19.7	0.050	

製程說明：

精度等級：(JIS 三級)

材料：(SCM440)

齒型：直齒

齒面處理：精銑

硬度處理：調質處理

四面研磨：有

壓力角：20度

Manufacturing Description

Precision grade : (JIS Grade 3)

Matenal : (SCM440)

Type : Straight Rack

Treatment of Teeth : Milled

Hardness : Quenched

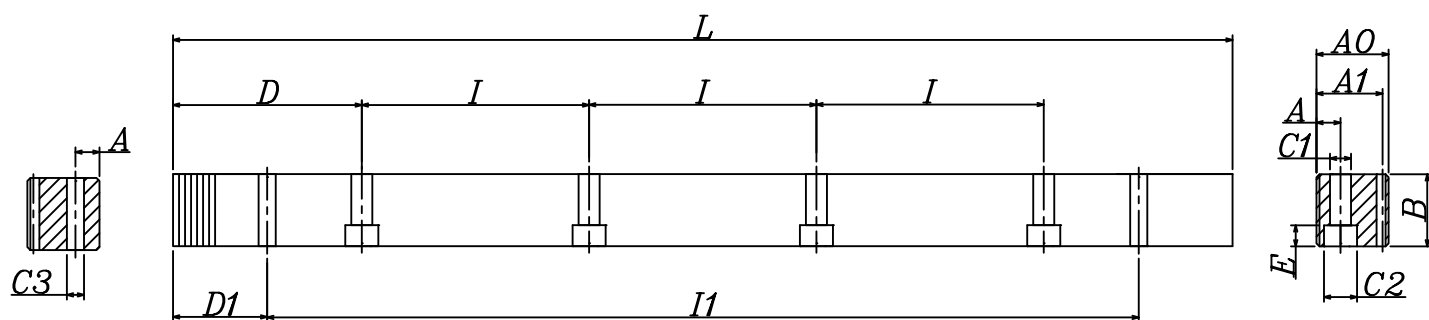
Sides Ground : Included

Pressure Angle : 20 degree

● 不同尺寸與材質以可依照圖面客製化

● Other Dimensions / Materials could be customized by drawings

型號：BSTM



型號 Code	模數 Module	L	齒數 Tooth No.	B	AO	A1	D	I	孔數 Hole No.	A	C1	C2	E	D1	I1	C3	總齒距誤差 Pitch Error / 300mm	齒面強度 Tooth surface torque(kgf)		
BSTM	20	50	2	502.65	80	20	20	18	62.83	125.66	4	8	7	11	7	31.3	440.1	5.7	0.059	102
	20	100	2	999.03	159	20	20	18	62.83	125.66	8	8	7	11	7	31.3	942.7	5.7	0.061	
	30	50	3	508.94	54	30	30	27	63.62	127.23	4	9	10	15	9	34.4	440.1	7.7	0.065	255
	30	100	3	1017.88	108	30	30	27	63.62	127.23	8	9	10	15	9	34.4	949.1	7.7	0.065	
	40	50	4	502.65	40	40	40	36	62.83	125.66	4	12	10	15	9	37.5	427.7	7.7	0.068	427
	40	100	4	1005.31	80	40	40	36	62.83	125.66	8	12	10	15	9	37.5	930.3	7.7	0.068	
	50	50	5	502.65	32	50	40	35	62.83	125.66	4	12	14	20	13	30.1	442.4	11.7	0.070	710
	50	100	5	1005.31	64	50	40	35	62.83	125.66	8	12	14	20	13	30.1	945.0	11.7	0.070	
	60	50	6	508.94	27	60	50	44	63.62	127.23	4	16	18	26	17	31.4	446.1	15.7	0.072	1180
	60	100	6	1017.88	54	60	50	44	63.62	127.23	8	16	18	26	17	31.4	955.0	15.7	0.072	
	80	50	8	502.65	20	80	80	71.5	62.83	125.66	4	25	22	33	21	26.6	449.5	19.7	0.075	1830
	80	100	8	1005.31	40	80	80	71.5	62.83	125.66	8	25	22	33	21	26.6	952.0	19.7	0.075	

製程說明：

精度等級：(JIS 五級)

材料：(SCM440)

齒型：直齒

齒面處理：精銑

硬度處理：無

四面研磨：無

壓力角：20度

Manufacturing Description

Precision grade : (JIS Grade 5)

Material : (SCM440)

Type : Straight Rack

Treatment of Teeth : Milled

Hardness : No Heat Treatment

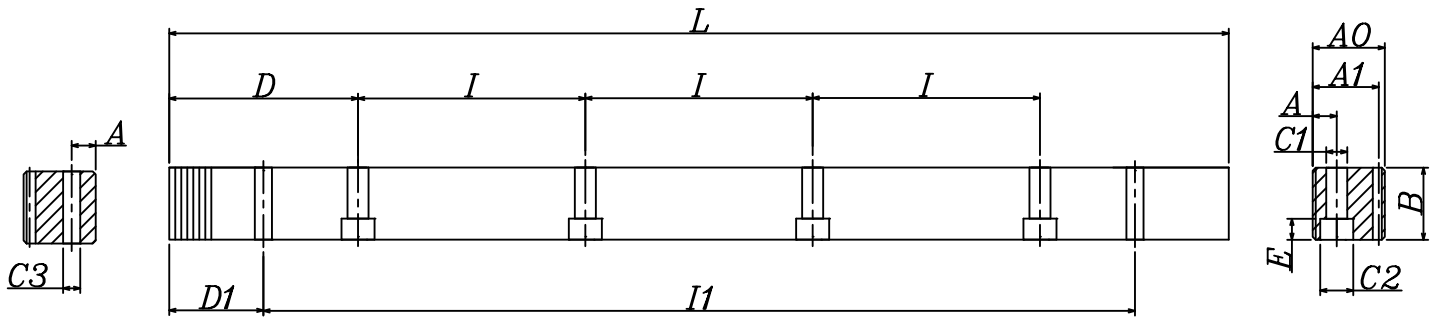
Sides Ground : Not Included

Pressure Angle : 20 degree

● 不同尺寸與材質以可依照圖面客製化

● Other Dimensions / Materials could be customized by drawings

型號：BSTMH



型號 Code	模數 Module	L	齒數 Tooth No.	B	AO	A1	D	I	孔數 Hole No.	A	C1	C2	E	D1	I1	C3	總齒距誤差 Pitch Error / 300mm	齒面強度 Tooth surface torque(kgf)	
BSTMH	20	50	2	502.65	80	24	24	22	62.83	125.66	4	8	7	11	7	31.3	440.1	5.7	360
	20	100	2	1005.31	160	24	24	22	62.83	125.66	8	8	7	11	7	31.3	942.7	5.7	
	30	50	3	508.94	54	29	29	26	63.62	127.23	4	9	10	15	9	34.4	440.1	7.7	1380
	30	100	3	1017.88	108	29	29	26	63.62	127.23	8	9	10	15	9	34.4	949.1	7.7	
	40	50	4	502.65	40	39	39	35	62.83	125.66	4	12	10	15	9	37.5	427.7	7.7	3320
	40	100	4	1005.31	80	39	39	35	62.83	125.66	8	12	10	15	9	37.5	930.3	7.7	
	50	50	5	502.65	32	49	39	34	62.83	125.66	4	12	14	20	13	30.1	442.4	11.7	5300
	50	100	5	1005.31	64	49	39	34	62.83	125.66	8	12	14	20	13	30.1	945.0	11.7	
	60	50	6	508.94	27	59	49	43	63.62	127.23	4	16	18	26	17	31.4	446.1	15.7	5300
	60	100	6	1017.88	54	59	49	43	63.62	127.23	8	16	18	26	17	31.4	955.0	15.7	
	80	50	8	502.65	20	79	79	71	62.83	125.66	4	25	22	33	21	26.6	449.5	19.7	5300
	80	100	8	1005.31	40	79	79	71	62.83	125.66	8	25	22	33	21	26.6	952.0	19.7	

製程說明：

精度等級：(JIS 六級)

材料：(SCM440)

齒型：直齒

齒面處理：精銑

硬度處理：熱處理；硬度為 55-60 度

四面研磨：無

壓力角：20度

Manufacturing Description

Precision grade : (JIS Grade 6)

Material : (SCM440)

Type : Straight Rack

Treatment of Teeth : Milled

Hardness : Heat Treatment ; 55~60 degree

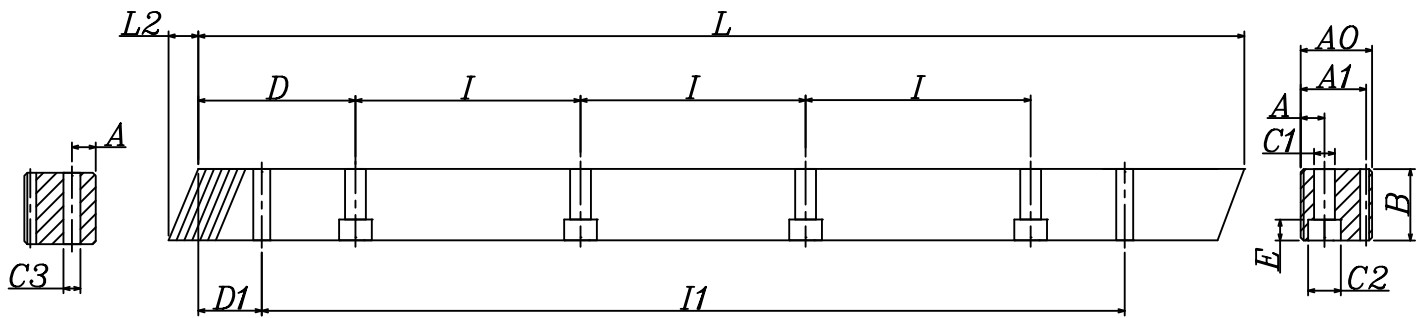
Sides Ground : Not Included

Pressure Angle : 20 degree

● 不同尺寸與材質以可依照圖面客製化

● Other Dimensions / Materials could be customized by drawings

型號：AHTGH



型號 Code	模數 Module	L	L2	齒數 Tooth No.	B	AO	A1	D	I	孔數 Hole No.	A	C1	C2	E	D1	I1	C3	總齒距誤差 Pitch Error / 300mm	齒面強度 Tooth surface torque (kgf)		
AHTGH	20	50	2	500	8.5	75	24	24	22	62.50	125	4	8	7	11	7	31.7	436.6	5.7	0.022	290
	20	100	2	1000	8.5	150	24	24	22	62.50	125	8	8	7	11	7	31.7	936.6	5.7	0.022	
	30	50	3	500	10.3	50	29	29	26	62.50	125	4	9	10	15	9	35.0	430.0	7.7	0.024	660
	30	100	3	1000	10.3	100	29	29	26	62.50	125	8	9	10	15	9	35.0	930.0	7.7	0.024	
	40	50	4	506.67	13.8	38	39	39	35	62.50	125	4	12	10	15	9	33.3	433.0	7.7	0.024	1220
	40	100	4	1000	13.8	75	39	39	35	62.50	125	8	12	10	15	9	33.3	933.4	7.7	0.024	
	50	50	5	500	17.4	30	49	39	34	62.50	125	4	12	14	20	13	37.5	425.0	11.7	0.025	1850
	50	100	5	1000	17.4	60	49	39	34	62.50	125	8	12	14	20	13	37.5	925.0	11.7	0.025	
	60	50	6	500	20.9	25	59	49	43	62.50	125	4	16	18	26	17	37.5	425.0	15.7	0.026	2650
	60	100	6	1000	20.9	50	59	49	43	62.50	125	8	16	18	26	17	37.5	925.0	15.7	0.026	
	80	50	8	480	28.0	18	79	79	71	60.00	120	4	25	22	33	21	120	240.0	19.7	0.027	4420
	80	100	8	960	28.0	36	79	79	71	60.00	120	8	25	22	33	21	120	720.0	19.7	0.027	

製程說明：

精度等級：(JIS 二級)

材料：(S45C 中碳鋼) S45C

齒型：斜齒

齒面處理：研磨

硬度處理：熱處理；硬度為45~50度

四面研磨：有

右旋角：19° 31' 42"

壓力角：20度

● 不同尺寸與材質以可依照圖面客製化

Manufacturing Description

Precision grade : (JIS Grade 2)

Material : (S45C Medium Carbon Steel) S45C

Type : Helical Rack

Treatment of Teeth : Ground

Hardness : Heat Treatment ; 45~50 degree

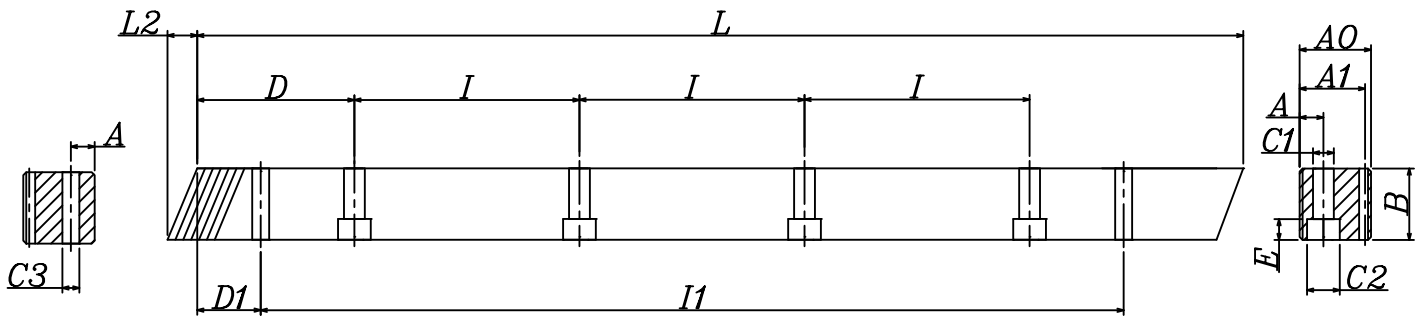
Sides Ground : Included

Right Hand Angle : 19° 31' 42"

Pressure Angle : 20 degree

● Other Dimensions / Materials could be customized by drawings

型號：AHTMQ



型號 Code	模數 Module	L	L2	齒數 Tooth No.	B	AO	A1	D	I	孔數 Hole No.	A	C1	C2	E	D1	I1	C3	總齒距誤差 Pitch Error / 300mm	齒面強度 Tooth surface torque(kgf)		
AHTMQ	20	50	2	500	8.9	75	25	24	22	62.50	125	4	8	7	11	7	31.7	436.6	5.7	0.034	160
	20	100	2	1000	8.9	150	25	24	22	62.50	125	8	8	7	11	7	31.7	936.6	5.7	0.034	
	30	50	3	500	10.6	50	30	29	26	62.50	125	4	9	10	15	9	35.0	430.0	7.7	0.034	380
	30	100	3	1000	10.6	100	30	29	26	62.50	125	8	9	10	15	9	35.0	930.0	7.7	0.034	
	40	50	4	506.67	14.2	38	40	39	35	62.50	125	4	12	10	15	9	33.3	433.0	7.7	0.038	700
	40	100	4	1000	14.2	75	40	39	35	62.50	125	8	12	10	15	9	33.3	933.4	7.7	0.038	
	50	50	5	500	17.4	30	50	39	34	62.50	125	4	12	14	20	13	37.5	425.0	11.7	0.040	1050
	50	100	5	1000	17.4	60	50	39	34	62.50	125	8	12	14	20	13	37.5	925.0	11.7	0.040	
	60	50	6	500	20.9	25	59	49	43	62.50	125	4	16	18	26	17	37.5	425.0	15.7	0.045	1450
	60	100	6	1000	20.9	50	59	49	43	62.50	125	8	16	18	26	17	37.5	925.0	15.7	0.045	
	80	50	8	480	28.0	18	79	79	71	60.00	120	4	25	22	33	21	120	240.0	19.7	0.050	2330
	80	100	8	960	28.0	36	79	79	71	60.00	120	8	25	22	33	21	120	720.0	19.7	0.050	

製程說明：

精度等級：(JIS 三級)

材料：(S45C 中碳鋼) S45C

齒型：斜齒

齒面處理：精銑

硬度處理：調質處理

四面研磨：有

右旋角：19° 31' 42"

壓力角：20度

● 不同尺寸與材質可以依照圖面客製化

Manufacturing Description

Precision grade : (JIS Grade 3)

Material : (S45C Medium Carbon Steel) S45C

Type : Helical Rack

Treatment of Teeth : Milled

Hardness : Quenched

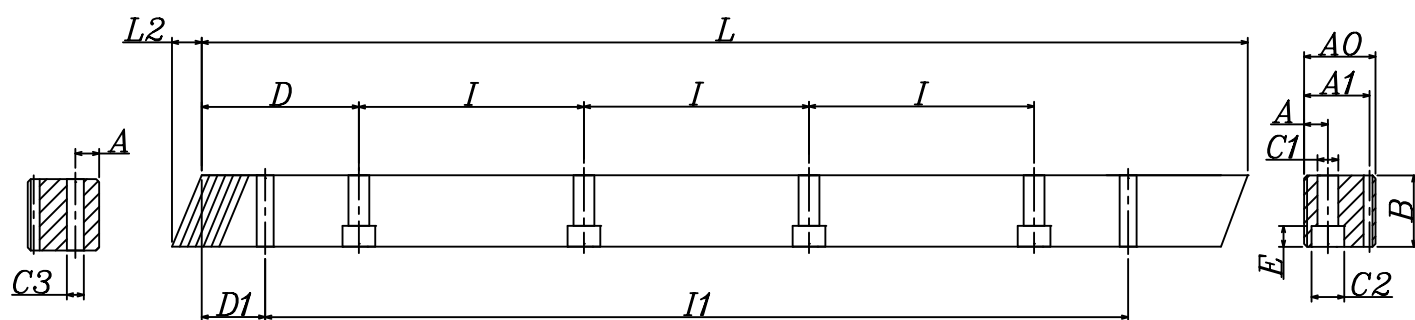
Sides Ground : Included

Right Hand Angle : 19° 31' 42"

Pressure Angle : 20 degree

● Other Dimensions / Materials could be customized by drawings

型號：AHTM



型號 Code	模數 Module	L	L2	齒數 Tooth No.	B	AO	A1	D	I	孔數 Hole No.	A	C1	C2	E	D1	I1	C3	總齒距誤差 Pitch Error / 300mm	齒面強度 Tooth surface torque(kgf)		
AHTM	20	50	2	500	9.2	75	26	24	22	62.50	125	4	8	7	11	7	31.7	436.6	5.7	0.061	95
	20	100	2	1000	9.2	150	26	24	22	62.50	125	8	8	7	11	7	31.7	936.6	5.7	0.061	
	30	50	3	500	11.0	50	31	29	26	62.50	125	4	9	10	15	9	35.0	430.0	7.7	0.065	220
	30	100	3	1000	11.0	100	31	29	26	62.50	125	8	9	10	15	9	35.0	930.0	7.7	0.065	
	40	50	4	506.67	14.5	38	41	39	35	62.50	125	4	12	10	15	9	33.3	433.0	7.7	0.068	420
	40	100	4	1000	14.5	75	41	39	35	62.50	125	8	12	10	15	9	33.3	933.4	7.7	0.068	
	50	50	5	500	17.7	30	50	39	34	62.50	125	4	12	14	20	13	37.5	425.0	11.7	0.070	645
	50	100	5	1000	17.7	60	50	39	34	62.50	125	8	12	14	20	13	37.5	925.0	11.7	0.070	
	60	50	6	500	21.3	25	60	49	43	62.50	125	4	16	18	26	17	37.5	425.0	15.7	0.072	930
	60	100	6	1000	21.3	50	60	49	43	62.50	125	8	16	18	26	17	37.5	925.0	15.7	0.072	
	80	50	8	480	28.7	18	81	79	71	60.00	120	4	25	22	33	21	120	240.0	19.7	0.075	1400
	80	100	8	960	28.7	36	81	79	71	60.00	120	8	25	22	33	21	120	720.0	19.7	0.075	

製程說明：

精度等級：(JIS 五級)

材料：(S45C 中碳鋼) S45C

齒型：斜齒

齒面處理：精銑

硬度處理：調質處理

四面研磨：無

右旋角：19° 31' 42"

壓力角：20度

● 不同尺寸與材質以可依照圖面客製化

Manufacturing Description

Precision grade : (JIS Grade 5)

Material : (S45C Medium Carbon Steel) S45C

Type : Helical Rack

Treatment of Teeth : Milled

Hardness : Quenched

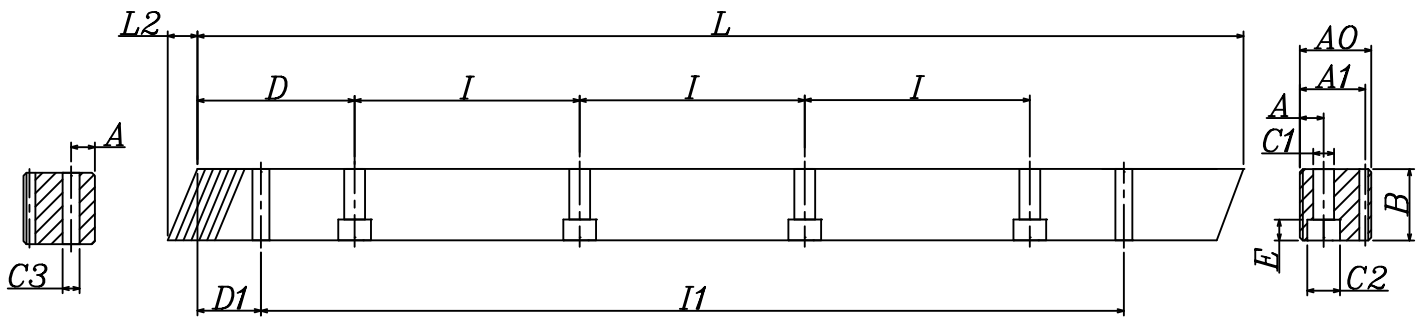
Sides Ground : Not Included

Right Hand Angle : 19° 31' 42"

Pressure Angle : 20 degree

● Other Dimensions / Materials could be customized by drawings

型號：AHTMH



型號 Code	模數 Module	L	L2	齒數 Tooth No.	B	AO	A1	D	I	孔數 Hole No.	A	C1	C2	E	D1	I1	C3	總齒距誤差 Pitch Error / 300mm	齒面強度 Tooth surface torque(kgf)		
AHTMH	20	50	2	500	8.5	75	24	24	22	62.50	125	4	8	7	11	7	31.7	436.6	5.7	0.086	290
	20	100	2	1000	8.5	150	24	24	22	62.50	125	8	8	7	11	7	31.7	936.6	5.7	0.086	
	30	50	3	500	10.3	50	29	29	26	62.50	125	4	9	10	15	9	35.0	430.0	7.7	0.091	660
	30	100	3	1000	10.3	100	29	29	26	62.50	125	8	9	10	15	9	35.0	930.0	7.7	0.091	
	40	50	4	506.67	13.8	38	39	39	35	62.50	125	4	12	10	15	9	33.3	433.0	7.7	0.095	1220
	40	100	4	1000	13.8	75	39	39	35	62.50	125	8	12	10	15	9	33.3	933.4	7.7	0.095	
	50	50	5	500	17.4	30	49	39	34	62.50	125	4	12	14	20	13	37.5	425.0	11.7	0.098	1850
	50	100	5	1000	17.4	60	49	39	34	62.50	125	8	12	14	20	13	37.5	925.0	11.7	0.098	
	60	50	6	500	20.9	25	59	49	43	62.50	125	4	16	18	26	17	37.5	425.0	15.7	0.100	2650
	60	100	6	1000	20.9	50	59	49	43	62.50	125	8	16	18	26	17	37.5	925.0	15.7	0.100	
	80	50	8	480	28.0	18	79	79	71	60.00	120	4	25	22	33	21	120	240.0	19.7	0.105	4420
	80	100	8	960	28.0	36	79	79	71	60.00	120	8	25	22	33	21	120	720.0	19.7	0.105	

製程說明：

精度等級：(JIS 六級)

材料：(S45C 中碳鋼) S45C

齒型：斜齒

齒面處理：精銑

硬度處理：熱處理；硬度為45~50度

四面研磨：無

右旋角：19° 31' 42"

壓力角：20度

● 不同尺寸與材質可以依照圖面客製化

Manufacturing Description

Precision grade : (JIS Grade 6)

Material : (S45C Medium Carbon Steel) S45C

Type : Helical Rack

Treatment of Teeth : Milled

Hardness : Heat Treatment ; 45~50 degree

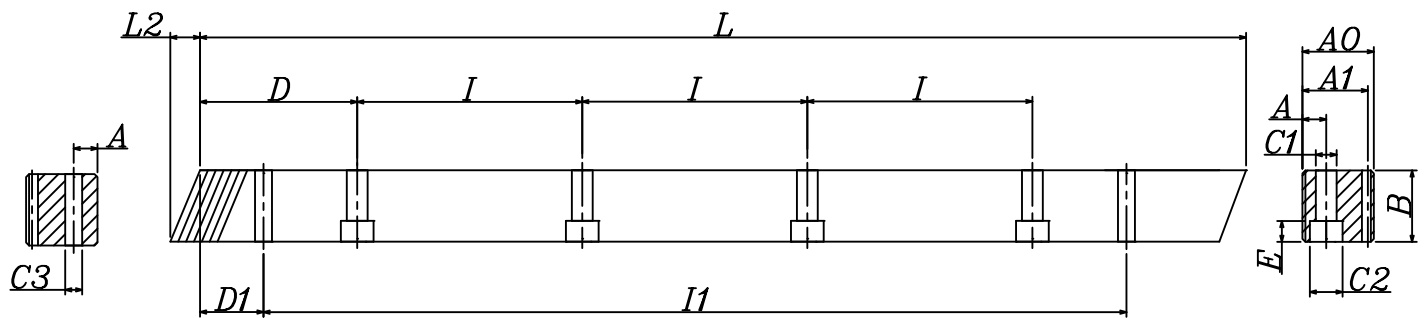
Sides Ground : Not Included

Right Hand Angle : 19° 31' 42"

Pressure Angle : 20 degree

● Other Dimensions / Materials could be customized by drawings

型號：BHTGH



型號 Code	模數 Module	L	L2	齒數 T00th No.	B	AO	A1	D	I	孔數 Hole No.	A	C1	C2	E	D1	I1	C3	總齒距誤差 Pitch Error / 300mm	齒面強度 Tooth surface torque(kgf)	
BHTGH	20	50	2	500	8.5	75	24	24	22	62.50	125	4	8	7	11	7	31.7	436.6	5.7	430
	20	100	2	1000	8.5	150	24	24	22	62.50	125	8	8	7	11	7	31.7	936.6	5.7	
	30	50	3	500	10.3	50	29	29	26	62.50	125	4	9	10	15	9	35.0	430.0	7.7	1015
	30	100	3	1000	10.3	100	29	29	26	62.50	125	8	9	10	15	9	35.0	930.0	7.7	
	40	50	4	506.67	13.8	38	39	39	35	62.50	125	4	12	10	15	9	33.3	433.0	7.7	1720
	40	100	4	1000	13.8	75	39	39	35	62.50	125	8	12	10	15	9	33.3	933.4	7.7	
	50	50	5	500	17.4	30	49	39	34	62.50	125	4	12	14	20	13	37.5	425.0	11.7	2620
	50	100	5	1000	17.4	60	49	39	34	62.50	125	8	12	14	20	13	37.5	925.0	11.7	
	60	50	6	500	20.9	25	59	49	43	62.50	125	4	16	18	26	17	37.5	425.0	15.7	3980
	60	100	6	1000	20.9	50	59	49	43	62.50	125	8	16	18	26	17	37.5	925.0	15.7	
	80	50	8	480	28.0	18	79	79	71	60.00	120	4	25	22	33	21	120	240.0	19.7	6300
	80	100	8	960	28.0	36	79	79	71	60.00	120	8	25	22	33	21	120	720.0	19.7	

製程說明：

精度等級：(JIS 二級)

材料：(SCM440)

齒型：斜齒

齒面處理：研磨

硬度處理：熱處理；硬度為55~60度

四面研磨：有

右旋角：19° 31' 42"

壓力角：20度

- 不同尺寸與材質以可依照圖面客製化

Manufacturing Description

Precision grade : (JIS Grade 2)

Material : (SCM440)

Type : Helical Rack

Treatment of Teeth : Ground

Hardness : Heat Treatment ; 55~60 degree

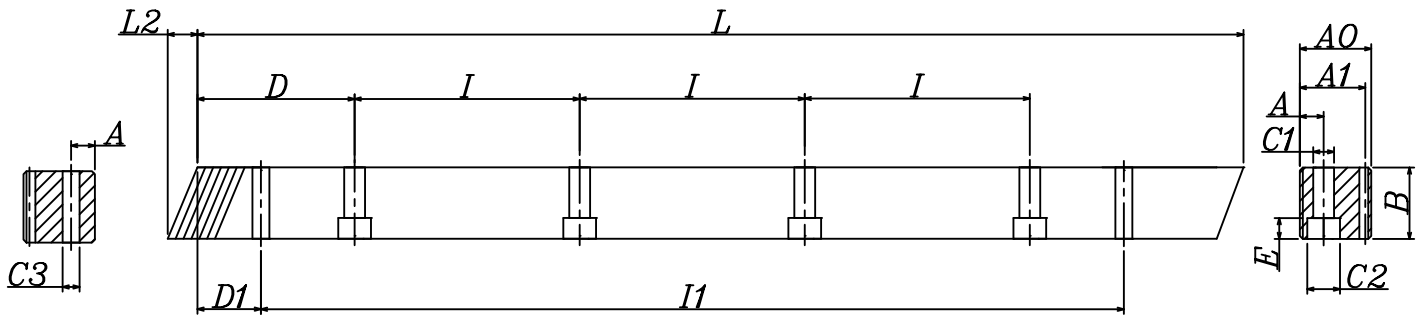
Sides Ground : Included

Right Hand Angle : 19° 31' 42"

Pressure Angle : 20 degree

- Other Dimensions / Materials could be customized by drawings

型號：BHTMQ



型號 Code	模數 Module	L	L2	齒數 Tooth No.	B	AO	A1	D	I	孔數 Hole No.	A	C1	C2	E	D1	I1	C3	總齒距誤差 Pitch Error / 300mm	齒面強度 Tooth surface torque(kgf)	
BHTMQ	20	50	2	500	8.9	75	25	24	22	62.50	125	4	8	7	11	7	31.7	436.6	5.7	210
	20	100	2	1000	8.9	150	25	24	22	62.50	125	8	8	7	11	7	31.7	936.6	5.7	
	30	50	3	500	10.6	50	30	29	26	62.50	125	4	9	10	15	9	35.0	430.0	7.7	505
	30	100	3	1000	10.6	100	30	29	26	62.50	125	8	9	10	15	9	35.0	930.0	7.7	
	40	50	4	506.67	14.2	38	40	39	35	62.50	125	4	12	10	15	9	33.3	433.0	7.7	960
	40	100	4	1000	14.2	75	40	39	35	62.50	125	8	12	10	15	9	33.3	933.4	7.7	
	50	50	5	500	17.4	30	50	39	34	62.50	125	4	12	14	20	13	37.5	425.0	11.7	1450
	50	100	5	1000	17.4	60	50	39	34	62.50	125	8	12	14	20	13	37.5	925.0	11.7	
	60	50	6	500	20.9	25	59	49	43	62.50	125	4	16	18	26	17	37.5	425.0	15.7	2320
	60	100	6	1000	20.9	50	59	49	43	62.50	125	8	16	18	26	17	37.5	925.0	15.7	
	80	50	8	480	28.0	18	79	79	71	60.00	120	4	25	22	33	21	120	240.0	19.7	3590
	80	100	8	960	28.0	36	79	79	71	60.00	120	8	25	22	33	21	120	720.0	19.7	

製程說明：

精度等級：(JIS 三級)

材料：(SCM440)

齒型：斜齒

齒面處理：精銑

硬度處理：調質處理

四面研磨：有

右旋角：19° 31' 42"

壓力角：20度

● 不同尺寸與材質以可依照圖面客製化

Manufacturing Description

Precision grade : (JIS Grade 3)

Material : (SCM440)

Type : Helical Rack

Treatment of Teeth : Milled

Hardness : Quenched

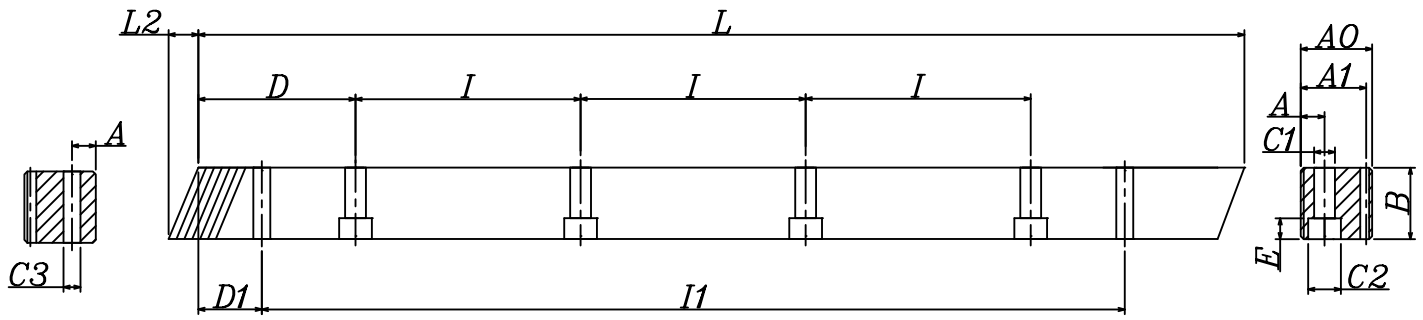
Sides Ground : Included

Right Hand Angle : 19° 31' 42"

Pressure Angle : 20 degree

● Other Dimensions / Materials could be customized by drawings

型號：BHTM



型號 Code		模數 Module	L	L2	齒數 Tooth No.	B	AO	A1	D	I	孔數 Hole No.	A	C1	C2	E	D1	I1	C3	總齒距誤差 Pitch Error / 300mm	齒面強度 Tooth surface torque(kgf)	
BHTM	20	50	2	500	9.2	75	26	24	22	62.50	125	4	8	7	11	7	31.7	436.6	5.7	0.061	120
	20	100	2	1000	9.2	150	26	24	22	62.50	125	8	8	7	11	7	31.7	936.6	5.7	0.061	
	30	50	3	500	11.0	50	31	29	26	62.50	125	4	9	10	15	9	35.0	430.0	7.7	0.065	305
	30	100	3	1000	11.0	100	31	29	26	62.50	125	8	9	10	15	9	35.0	930.0	7.7	0.065	
	40	50	4	506.67	14.5	38	41	39	35	62.50	125	4	12	10	15	9	33.3	433.0	7.7	0.068	530
	40	100	4	1000	14.5	75	41	39	35	62.50	125	8	12	10	15	9	33.3	933.4	7.7	0.068	
	50	50	5	500	17.7	30	50	39	34	62.50	125	4	12	14	20	13	37.5	425.0	11.7	0.070	843
	50	100	5	1000	17.7	60	50	39	34	62.50	125	8	12	14	20	13	37.5	925.0	11.7	0.070	
	60	50	6	500	21.3	25	60	49	43	62.50	125	4	16	18	26	17	37.5	425.0	15.7	0.072	1405
	60	100	6	1000	21.3	50	60	49	43	62.50	125	8	16	18	26	17	37.5	925.0	15.7	0.072	
	80	50	8	480	28.7	18	81	79	71	60.00	120	4	25	22	33	21	120	240.0	19.7	0.075	2105
	80	100	8	960	28.7	36	81	79	71	60.00	120	8	25	22	33	21	120	720.0	19.7	0.075	

製程說明：

精度等級：(JIS 五級)

材料：(SCM440)

齒型：斜齒

齒面處理：精銑

硬度處理：調質處理

四面研磨：無

右旋角：19° 31' 42"

壓力角：20度

● 不同尺寸與材質以可依照圖面客製化

Manufacturing Description

Precision grade : (JIS Grade 5)

Material : (SCM440)

Type : Helical Rack

Treatment of Teeth : Milled

Hardness : Quenched

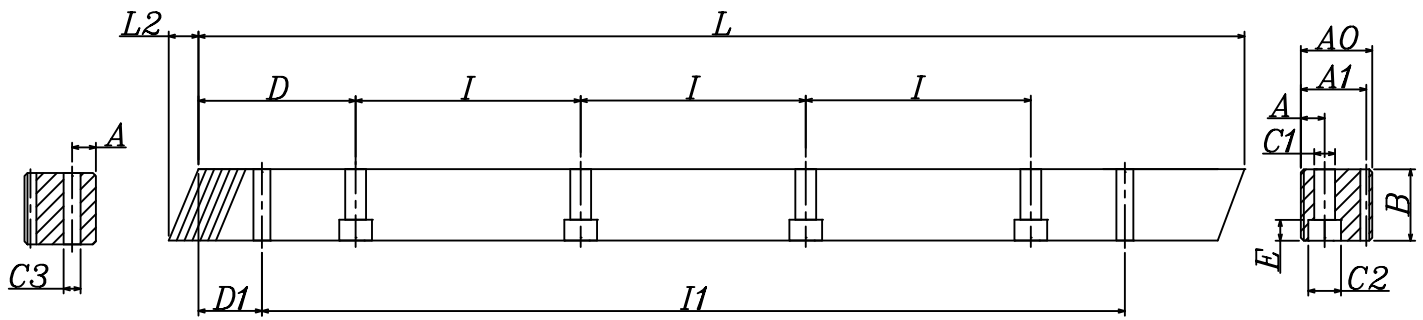
Sides Ground : Not Included

Right Hand Angle : 19° 31' 42"

Pressure Angle : 20 degree

● Other Dimensions / Materials could be customized by drawings

型號：BHTMH



型號 Code	模數 Module	L	L2	齒數 Tooth No.	B	AO	A1	D	I	孔數 Hole No.	A	C1	C2	E	D1	I1	C3	總齒距誤差 Pitch Error / 300mm	齒面強度 Tooth surface torque(kgf)	
BHTMH	20	50	2	500	8.5	75	24	24	22	62.50	125	4	8	7	11	7	31.7	436.6	5.7	430
	20	100	2	1000	8.5	150	24	24	22	62.50	125	8	8	7	11	7	31.7	936.6	5.7	
	30	50	3	500	10.3	50	29	29	26	62.50	125	4	9	10	15	9	35.0	430.0	7.7	1015
	30	100	3	1000	10.3	100	29	29	26	62.50	125	8	9	10	15	9	35.0	930.0	7.7	
	40	50	4	506.67	13.8	38	39	39	35	62.50	125	4	12	10	15	9	33.3	433.0	7.7	1720
	40	100	4	1000	13.8	75	39	39	35	62.50	125	8	12	10	15	9	33.3	933.4	7.7	
	50	50	5	500	17.4	30	49	39	34	62.50	125	4	12	14	20	13	37.5	425.0	11.7	2620
	50	100	5	1000	17.4	60	49	39	34	62.50	125	8	12	14	20	13	37.5	925.0	11.7	
	60	50	6	500	20.9	25	59	49	43	62.50	125	4	16	18	26	17	37.5	425.0	15.7	3980
	60	100	6	1000	20.9	50	59	49	43	62.50	125	8	16	18	26	17	37.5	925.0	15.7	
	80	50	8	480	28.0	18	79	79	71	60.00	120	4	25	22	33	21	120	240.0	19.7	6300
	80	100	8	960	28.0	36	79	79	71	60.00	120	8	25	22	33	21	120	720.0	19.7	

製程說明：

精度等級：(JIS 六級)

材料：(SCM440)

齒型：斜齒

齒面處理：精銑

硬度處理：熱處理；硬度為55~60度

四面研磨：無

右旋角：19° 31' 42"

壓力角：20度

● 不同尺寸與材質可以依照圖面客製化

Manufacturing Description

Precision grade : (JIS Grade 6)

Material : (SCM440)

Type : Helical Rack

Treatment of Teeth : Milled

Hardness : Heat Treatment ; 55~60 degree

Sides Ground : Not Included

Right Hand Angle : 19° 31' 42"

Pressure Angle : 20 degree

● Other Dimensions / Materials could be customized by drawings



嘉晟精密有限公司



www.chusheng.com.tw

台中市大里區爽文路720號

No.720, Shuangwen Rd., Dali Dist.,
Taichung City 412, Taiwan (R.O.C.)

TEL: +886-4-2407-7869

FAX: +886-4-2407-7859

E-mail: chu.sheng66@msa.hinet.net